

R2FSAL-WD

2" FQ - Square Adjustable Trimless (Dim-To-Warm)

WAC LIGHTING



Fixture Type:

Catalog Number:

Project:

Location:

PRODUCT DESCRIPTION

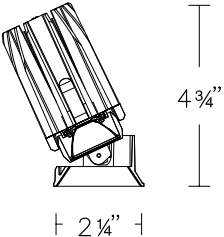
The FQ Recessed series offers a complete line of high performance LED luminaires that provide outstanding functionality and quality. The series features superlative glare control with 30° shielding, 35° vertical tilting and uniform floor-to-ceiling wall washing. Multiple power level options and a full line of round and square, trimmed and trimless luminaires offer versatile solutions for various lighting applications. Easy to order, install, and service.

FEATURES

- Two-piece die-cast construction
- Light engine mounted on trim with springs for easy replacement
- 0-35° vertical tilting
- Center beam alignment retained throughout adjustment range
- Field changeable beam angle with reflectors provided
- Accepts one Lens or glare control accessory
- 5 year WAC Lighting product warranty

SPECIFICATIONS

Construction:	Durable die-cast aluminum construction
Input	Universal 120-277V AC 50/60 Hz
Dimming:	Electronic Low Voltage (ELV): 100%-1% Triac: 100%-1% 0-10V: 100-1%
Light Source:	High output 3-step Mac Adam Ellipse COB Rated life of 50,000 hours at L70
Mounting:	Heavy gauge retention clips support trim firmly. Safety cabling standard. Ceiling cutout: Ø 3 1/2" Accommodates 1/2" - 1" ceiling thickness
Finish:	Electrostatically powder coated White, Black, Dark Bronze. Enamel coated Haze.
Standards:	ETL & cETL Damp Location Listed, Title 24 JA8-2019 Compliant.

	Model	Beam	Lumens	CBCP	Color Temp	CRI	Finishes	Reflector/Trim
	R2FSAL <i>Sqaure Trimless</i>	<i>F</i> 40°	925	1680	WD 3000K-1800K	90	BK DB HZ WT	<i>Black</i> <i>Dark Bronze</i> <i>Haze</i> <i>White</i>
		<i>W</i> 55°	910	1205				

R2FSAL-WD-__

Example: **R2FSAL-WD-BK** (Beam F-40° reflector is pre-installed. Beam W-55° reflector is included.)

Please see next page for housing units (required)

wacighting.com
Phone (800) 526.2588
Fax (800) 526.2585

Headquarters/Eastern Distribution Center
44 Harbor Park Drive
Port Washington, NY 11050

Central Distribution Center
1600 Distribution Ct
Lithia Springs, GA 30122

Western Distribution Center
1750 Archibald Avenue
Ontario, CA 91760

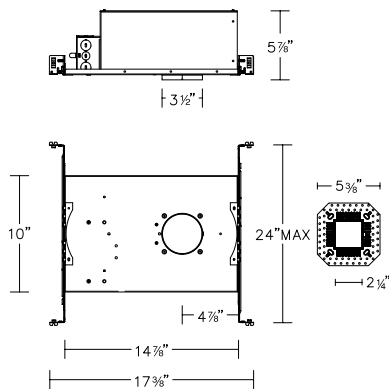
R2FSAL-WD

2" FQ - Square Adjustable Trimless (Dim-To-Warm)

WAC LIGHTING

HOUSING (Required)

New Construction
IC Airtight



Model

R2FSNL

Power

1 15W IC

Emergency Backup

N/A

R2FS__-__

Example: R2FSNL-1

GLARE CONTROL ACCESSORIES

LENS-11-HCM	Honeycomb Louver
LENS-11P-CRL-BK	Cross Louver

LENS ACCESSORIES

LENS-11	AMB RED BLU GRN SPR BEL	Amber Red Blue Green Spread Beam Elongating
---------	--	--

wacighting.com
Phone (800) 526.2588
Fax (800) 526.2585

Headquarters/Eastern Distribution Center
44 Harbor Park Drive
Port Washington, NY 11050

Central Distribution Center
1600 Distribution Ct
Lithia Springs, GA 30122

Western Distribution Center
1750 Archibald Avenue
Ontario, CA 91760