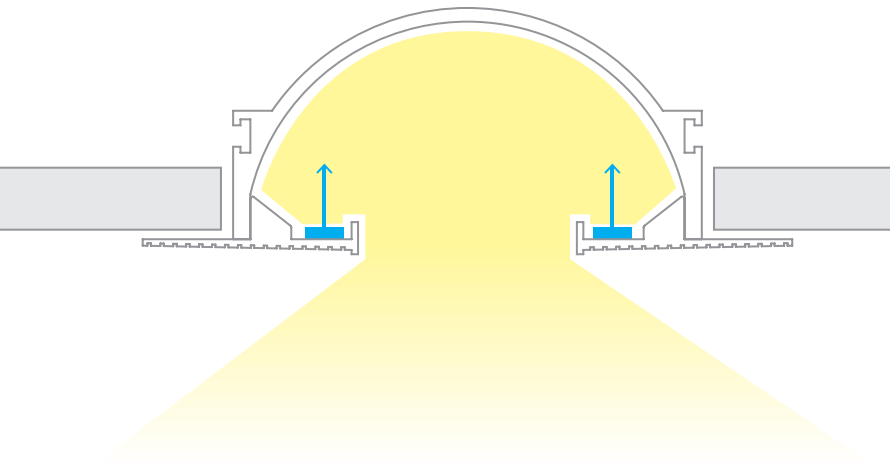


INDIRECT RECESSED CHANNEL

LED-T

WAC LIGHTING

Responsible Lighting®

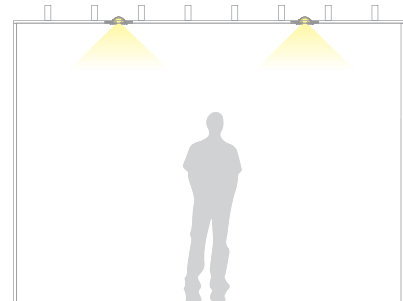


Fixture Type:

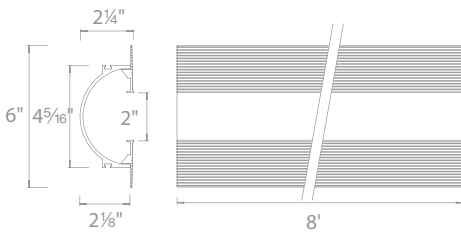
Catalog Number:

Project: _____

Location: _____



- Linear channel can be field cut
- Accommodates up to two runs of InvisiLED® indoor tapes
- Dense foam insert for spackling
- Aluminum extrusion powder coated in matte white



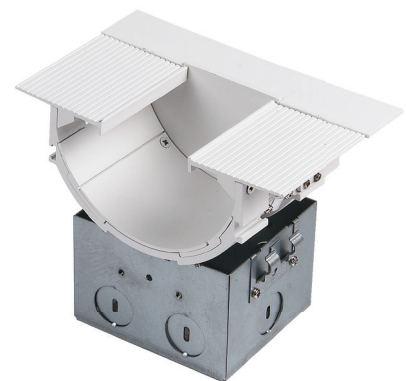
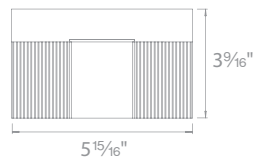
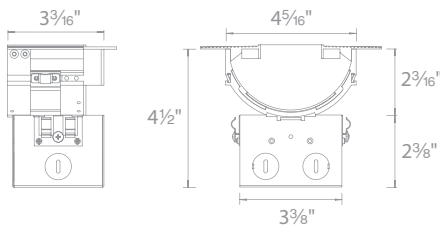
8ft linear channel
Includes an end cap
Can be field cut

LED-T-RCH3-WT



Power feed
Includes a wiring box, two hanger bars,
two five-pin InvisiLED® adapters, and one end cap
The end cap may be placed on either side or be removed
Hanger bars may install on any side of the wiring box

LED-T-RBOX3-WT



LED-T-____-WT

Example: **LED-T-RCH3-WT**

WAC Lighting
www.waclighting.com
Phone (800) 526.2588 • Fax (800) 526.2585

Headquarters/Eastern Distribution Center
44 Harbor Park Drive • Port Washington, NY 11050
Phone (516) 515.5000 • Fax (516) 515.5050

Western Distribution Center
1750 Archibald Avenue • Ontario, CA 91760
Phone (800) 526.2588 • Fax (800) 526.2585

INDIRECT RECESSED CHANNEL LED-T

WAC LIGHTING
Responsible Lighting®

PERFORMANCE CHART

	InvisiLED® Pro3	InvisiLED® Pro2	InvisiLED® Pro	InvisiLED® LITE
2200K	155			
2700K	275	235	145	110
3000K	285	215	145	125
3500K	315	235	150	
4500K	340	235	155	

Two strips of tapes were used, data shows lumen output per foot

WAC Lighting
www.waclighting.com
Phone (800) 526.2588 • Fax (800) 526.2585

Headquarters/Eastern Distribution Center
44 Harbor Park Drive • Port Washington, NY 11050
Phone (516) 515.5000 • Fax (516) 515.5050

Western Distribution Center
1750 Archibald Avenue • Ontario, CA 91760
Phone (800) 526.2588 • Fax (800) 526.2585