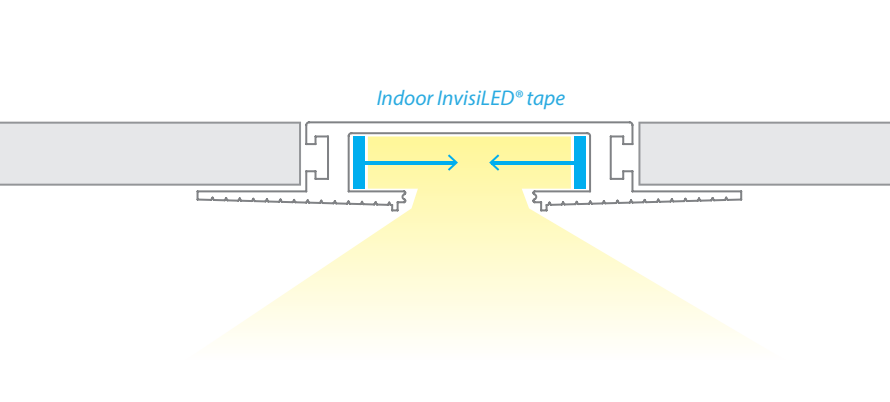


# SYMMETRICAL RECESSED CHANNEL

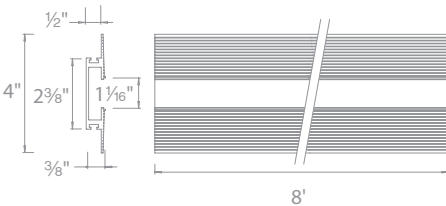
## LED-T-RCH1

# WAC LIGHTING

Responsible Lighting®



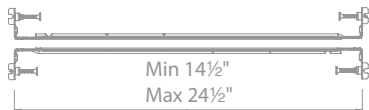
- Installs within drywall depth
- Linear channel can be field cut
- Accomodates either one or two runs of InvisiLED® indoor tape  
See individual InvisiLED spec sheets.
- Includes a translucent white acrylic diffuser
- Dense foam insert for spackling
- Aluminum extrusion powder coated in matte white
- Remote transformer is required



8 ft linear channel

**LED-T-RCH1-WT**

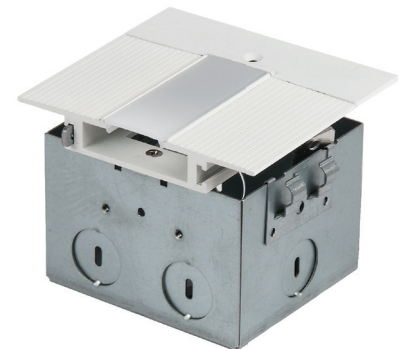
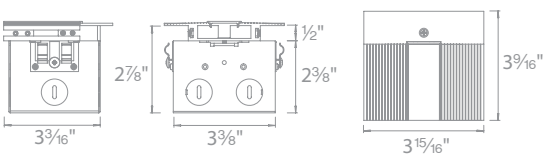
*Includes an end cap and diffuser  
Can be field cut*



Power feed

**LED-T-RBOX1-WT**

*Includes a wiring box, two hanger bars,  
two five-pin InvisiLED® adapters, an end cap and diffuser  
The end cap may be placed on either side or be removed  
Hanger bars may install on any side of the wiring box*



**LED-T-\_\_\_\_-WT**

Example: **LED-T-RCH1-WT**

WAC Lighting  
www.waclighting.com  
Phone (800) 526.2588 • Fax (800) 526.2585

Headquarters/Eastern Distribution Center  
44 Harbor Park Drive • Port Washington, NY 11050  
Phone (516) 515.5000 • Fax (516) 515.5050

Western Distribution Center  
1750 Archibald Avenue • Ontario, CA 91760  
Phone (800) 526.2588 • Fax (800) 526.2585

# SYMMETRICAL RECESSED CHANNEL

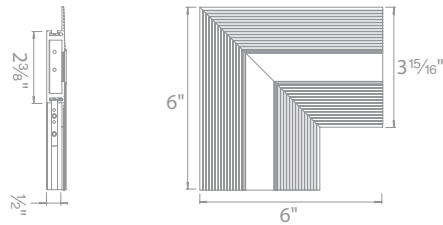
# WAC LIGHTING

## LED-T

Responsible Lighting®

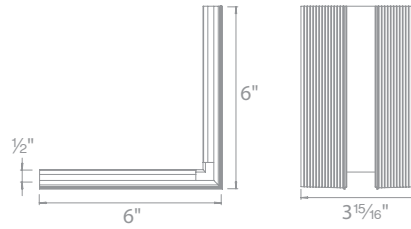
Lateral corner  
Includes diffuser

**LED-T-CTC1-WT**



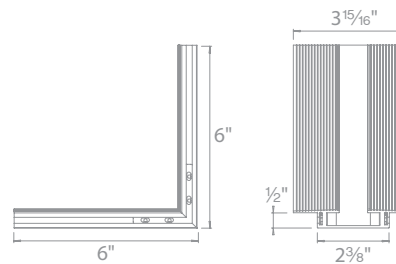
Perpendicular corner  
Transitions between walls or wall to ceiling  
Includes diffuser

**LED-T-WTC1-WT**



Outside corner  
Transitions around columns, bump outs, or soffits  
Includes diffuser

**LED-T-WTW1-WT**



## LED-T-\_\_\_\_-WT

Example: **LED-T-WTW1-WT**

### PERFORMANCE CHART

	InvisiLED® Pro3	InvisiLED® Pro2	InvisiLED® Pro	InvisiLED® LITE
2200K		120		
2700K	215	180	110	85
3000K	220	165	110	100
3500K	245	185	115	
4500K	265	185	120	

Two strips of tapes were used under the diffuser, data shows lumen output per foot

**WAC Lighting**  
www.waclighting.com  
Phone (800) 526.2588 • Fax (800) 526.2585

**Headquarters/Eastern Distribution Center**  
44 Harbor Park Drive • Port Washington, NY 11050  
Phone (516) 515.5000 • Fax (516) 515.5050

**Western Distribution Center**  
1750 Archibald Avenue • Ontario, CA 91760  
Phone (800) 526.2588 • Fax (800) 526.2585