

WORKSTATION MUWS-649SB



• FEATURES

- Patent pending accessories rail system
- Dura Shield scratch resistant coating
- 16-gauge type 304 stainless steel
- EZ clean bevel basin design

• TECHNICAL INFORMATION

- External dimension: 51"Lx18.5"Wx10"D
- Basin dimensions: 49"Lx16.5"Wx10"D
- 1/8" thick sound dampening pad
- Rim width: 1"
- Rim corner: 1/4" round

• FINISHES

- Satin Brushed stainless steel

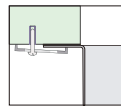
• INSTALLATION OPTIONS

- Under-mount

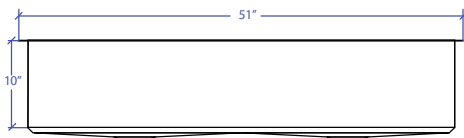
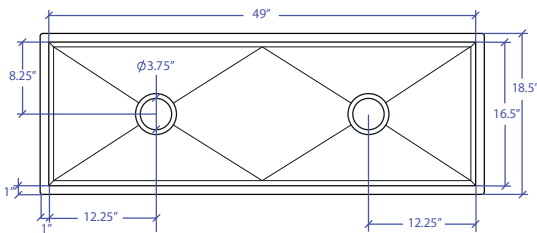
• MINIMUM CABINET SIZE (I.D.)

- Under-mount 53"

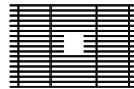
• INSTALLATION TYPE



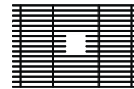
Under-mount



• INCLUDED ACCESSORIES



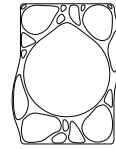
MBG-6520SB
Basin Grid



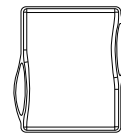
MBG-6520SB
Basin Grid



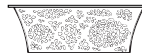
MWBM-651SB
Bain Marie



MWSM-651SB
Salad Mixer



MWCB-651BB
Cutting Board



MWC-651SB
Colander

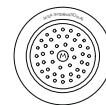
• OPTIONAL ACCESSORIES



MWSS-651SB
Side Sink



MDC-101SB
Disposal Collar



MKD-101SB
Strainer

PROJECT INFORMATION

Project			
Date	/ /	QTY	
Specifier			
Contact			
Note			