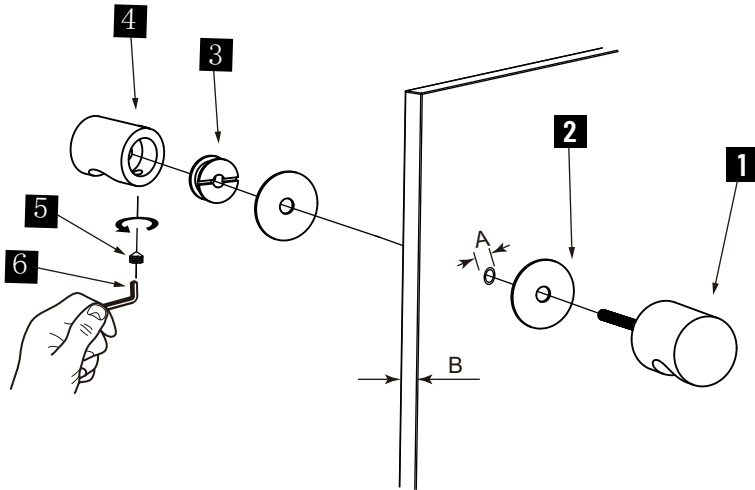


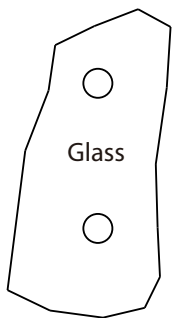
PORTO COLLECTION

DOUBLE SDH KNOB

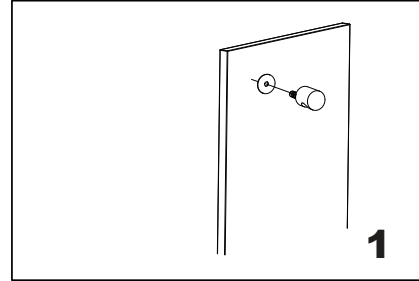
1377502



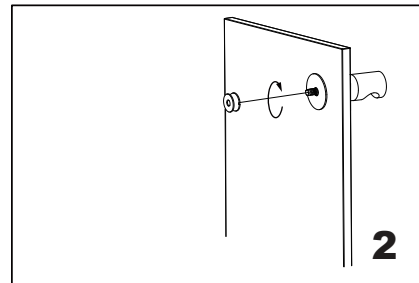
1. Knob-A x 1
2. Clear Gasket x 2
3. Fixing Bracket x 1
4. Knob-B x 1
5. Set Screw M5 x 1
6. Allen Key 2.5mm x 1



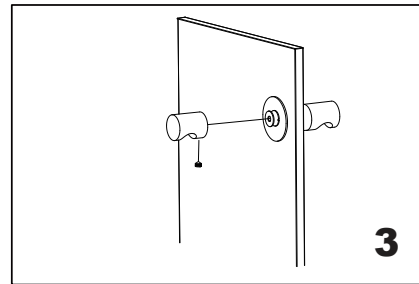
GLASS INFO		
A	1/2"(12mm)	Glass Hole Diameter
B	6-12mm	Glass Thickness



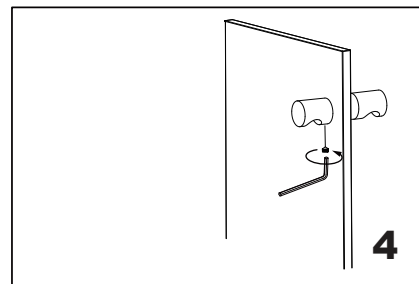
1
Install the knob-A (bolt) through the glass hole, make sure the rubber gaskets are between knob&glass.



2
Screw in the fixing bracket into the knob-A bolt.



3
Add the knob-B on the fixing bracket,make sure the set screw hole in the bottom.



4
Fix the set screw on the knob-B,tighten it to avoid loose from fixing brackets.