

**Croma**  
**Showerpipe 150 1-Jet, 2.0 GPM**  
 Finishes : **brushed nickel** Part no. : **27169821**



## Description

### Features

- consists of: Showerhead, Handshower, Thermostatic shower mixer, Handshower hose, Slider
- Flow: 2.0 GPM (7.6 L/Min)
- Outlets may not be operated simultaneously
- Shower outlet flow: 2.0 GPM (7.6 L/min)
- Anti-scald 100° safety stop
- Integrated volume control/diverter for 2 functions
- Exposed installation
- Thermostatic cartridge
- Built-in service stops

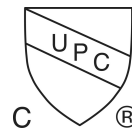
## Item details

List Price \$ 1,248.00

## Technology



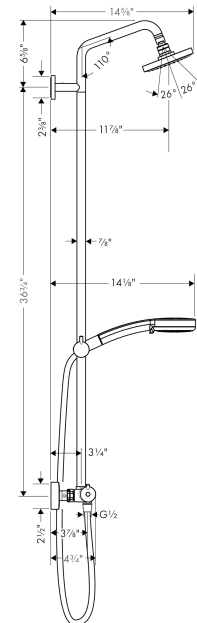
## Compliance



## Product image



## Scale drawing

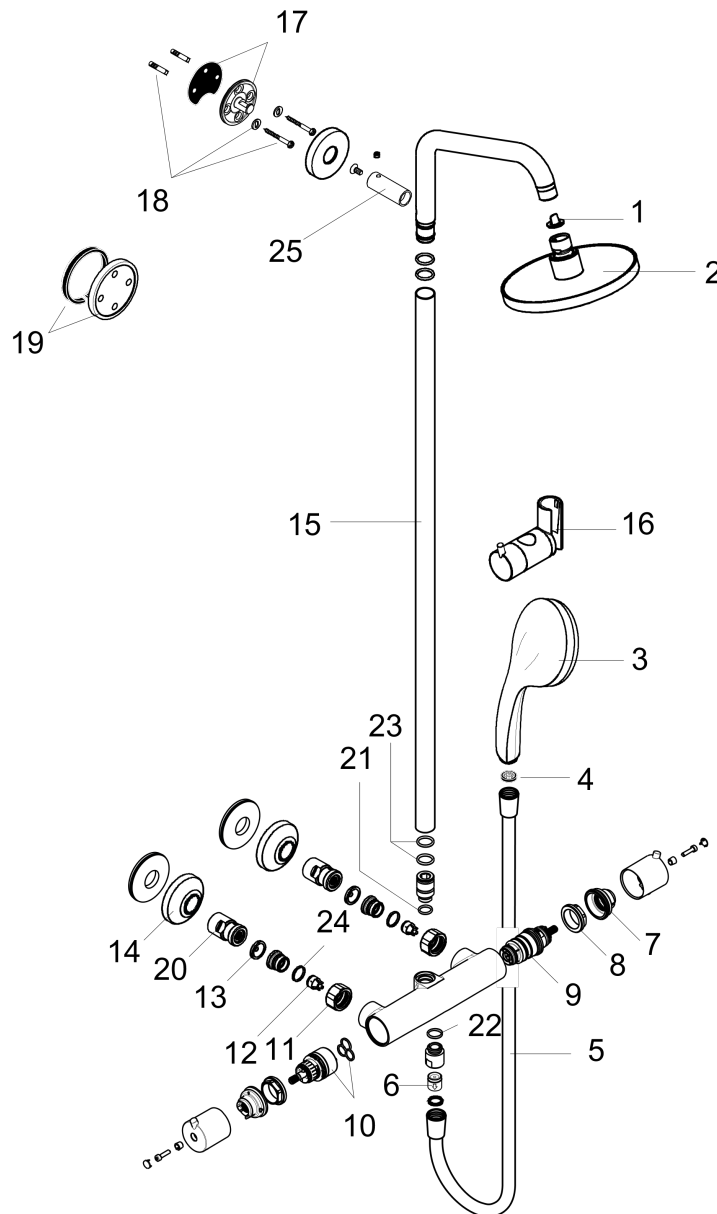


**Croma**  
**Showerpipe 150 1-Jet, 2.0 GPM**  
 Finishes : **brushed nickel** Part no. : **27169821**



Exploded drawing

Year of production: >07/12



**Croma**

**Showerpipe 150 1-Jet, 2.0 GPM**

Finishes : **brushed nickel** Part no. : **27169821**



**Spare parts list**

Year of production: >07/12

Pos.	Description	Part no.	Price	PU
1	filter packing	88649000	-	1
2	head shower	04342820	-	1
3	handshower	04083820	-	1
4	filter packing	94246000	-	1
5	shower hose 1,60 m	28276823	-	1
6	non return valve	97980000	-	1
7	safety set for temperature control	98916000	-	1
8	nut	98913000	-	1
9	thermostat cartridge	98282001	-	1
10	shut off unit with selector	98283000	-	1
11	set of nuts	96157820	-	1
12	non return valve	96737000	-	1
13	filter packing	96922000	-	1
14	escutcheon	98340820	-	1
15	pipe 1200 mm	95665820	-	1
16	support, assy	97651820	-	1
17	wall flange	95688000	-	1
18	mounting set	96179000	-	1
19	tile-matching-disk	95239820	-	1
20	isolation valve	98341000	-	1
21	O-ring 12x2	98214000	-	1
22	O-ring 14x2	98129000	-	1
23	O-ring 15x2,5	98131000	-	1
24	O-ring 17x1,5	98137000	-	1
25	sleeve	92166820	-	1
a	base body	16181181	-	1
b	noise reduction	96429000	-	1