

225-76 VERTIGO 6LT LRG PENDANT GOLD FINISH INSTALLATION INSTRUCTIONS



WARNING

**DISCONNECT POWER BEFORE RE-LAMPING OR WIRING THE FIXTURE
READ ALL INSTRUCTIONS COMPLETELY BEFORE STARTING INSTALLATION.**



CAUTION

- TO AVOID THE RISK OF FIRE OR SHOCK, FIXTURE MUST BE INSTALLED IN COMPLIANCE WITH ALL APPLICABLE NATIONAL AND LOCAL ELECTRICAL/BUILDING CODES.
- INSTALLATION AND MAINTENANCE OF THIS UNIT REQUIRES AN ELECTRICIAN OR CERTIFIED FACTORY TRAINED TECHNICIAN.
- If an existing fixture is being replaced, remove it and note to which of the wires in the outlet box the fixture was attached. DO NOT SEPARATE ANY OTHER WIRES THAT MAY BE IN THE BOX. DO NOT DAMAGE THE INSULATION OF OLDER WIRING. In older buildings it is always good practice to reconfirm the polarity of the wiring.

NOTICE

- The important safeguards and instructions outlined on this sheet cannot cover all possible conditions and situations that may occur. It must be understood that common sense, caution and care factors that cannot be built into any product. Caution and care must be supplied by the person(s) installing, operating and caring of this lighting fixture.
- This fixture is designed to be mounted on a correctly installed standard round or octagon box or a through wiring box with a plaster frame. The box must be securely mounted to the structure of the building. The crossbar and hardware supplied should be used. Directly mounting the fixture to the outlet box may make it impossible to correctly align the fixture.
- This fixture is supplied with with a 4-pcs. stem. There is one 6" section, two 12" section and one 18" section. This feature allows the fixture to be mounted with a stem up to 48" in length in 6" increments (See Figure-3).
- This fixture is supplied with a double loop. This allows the fixture to hang straight even when mounted to angled ceiling.

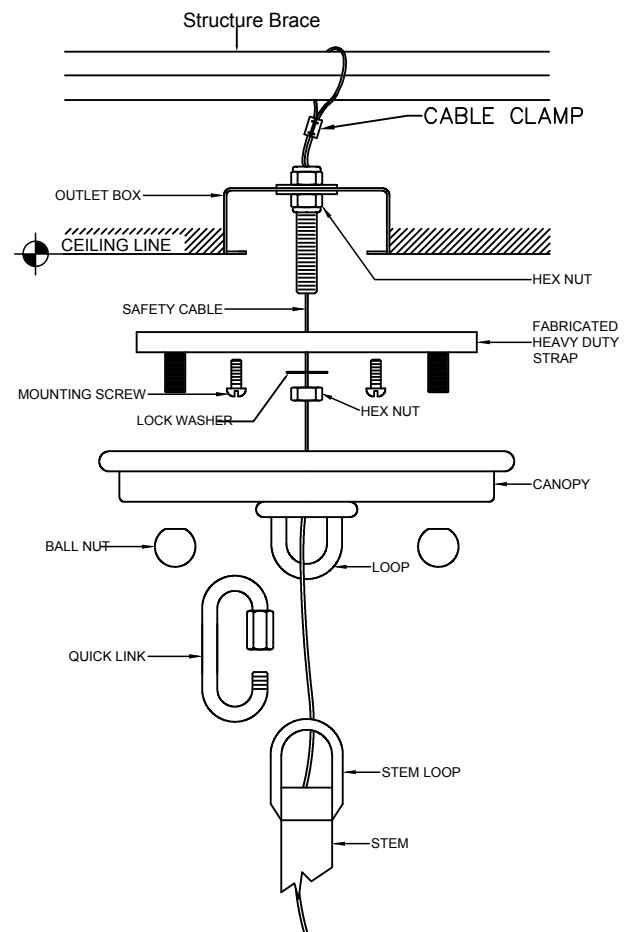


Figure-1

FIXTURE PREPARATION

1. Remove the fixture, glass/metal prism, parts and parts bag(s) from the carton.

NOTICE:

**Before discarding the carton,
double check to make certain that all parts are found.**

2. Determine the overall desired length of the fixture. Thread the leads through each stem section and the loop at the top as they are assembled.
3. Measure 6" of lead wire beyond the top of the screw collar loop. Cut off the excess wire. Strip the insulation off the ends of the leads exposing approximately 1/2" of wire. Twist the strands of wire together.

FIXTURE INSTALLATION

1. Attach the SAFETY CABLE to the building structure or brace. See Figure-1.

NOTICE:
THIS LUMINAIRE MUST BE MOUNTED OR SUPPORTED INDEPENDENTLY OF AN OUTLET BOX.



WARNING

REFER TO THE ILLUSTRATION FOR CORRECT AND SAFE INSTALLATION OF SAFETY CABLE. FAILURE TO FOLLOW THIS INSTRUCTION COULD RESULT HARM/DAMAGE TO THE FIXTURE, PROPERTY AND/OR PERSON(S)!

2. Attach the fabricated heavy duty strap to the outlet box.
3. Place the canopy over the fabricated heavy duty strap. Using the ball nuts, temporarily secure the canopy in place.
4. Using the quick link, hang the fixture.
5. Unscrew the ball nut and rest the fixture on top of a ladder before wire connection.



WARNING

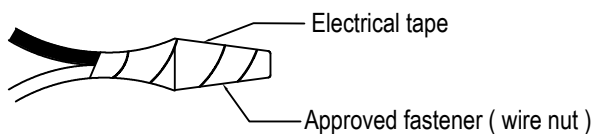
Rest the fixture on top of a ladder with a blanket or carpet before connecting the electrical wires to avoid any accidents or damage to the fixture.

6. Fasten the white fixture lead of the LED Light to the white wire in the outlet box. Fasten the wires together with an approved fastener (wire nut). Starting about 1" below the fastener, tightly wrap the connection with electrical tape so that the connections seals the end of the fastener.

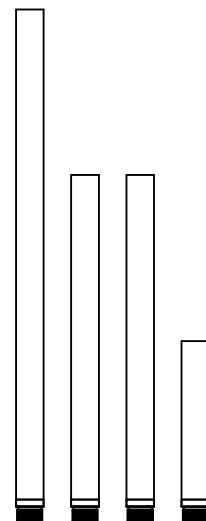


WARNING

Make sure that there is no exposed wire or strands that could cause a dangerous short circuit!



7. Connect the black fixture lead of the LED Light to the black wire in the outlet box. Fasten the joined wires as in step 6.



ADJUSTABLE
STEMS

Figure-2

8. Lift the canopy and secure it using the 2 ball nuts.
9. Using the small Allen ("L") Wrench supplied, loosen the Set Screw on the ring at the bottom of the fixture. Turn the ring counterclockwise to unlatch it from the bottom of the fixture.
10. Remove the ring, lens and cylinder.
11. Install the LED bulbs.

WARNING
DO NOT EXCEED RECOMMENDED WATTAGE!

12. Reinstall the cylinder, lens and ring. Tighten the Set Screw.
13. Restore power to circuit at breaker or fuse box.

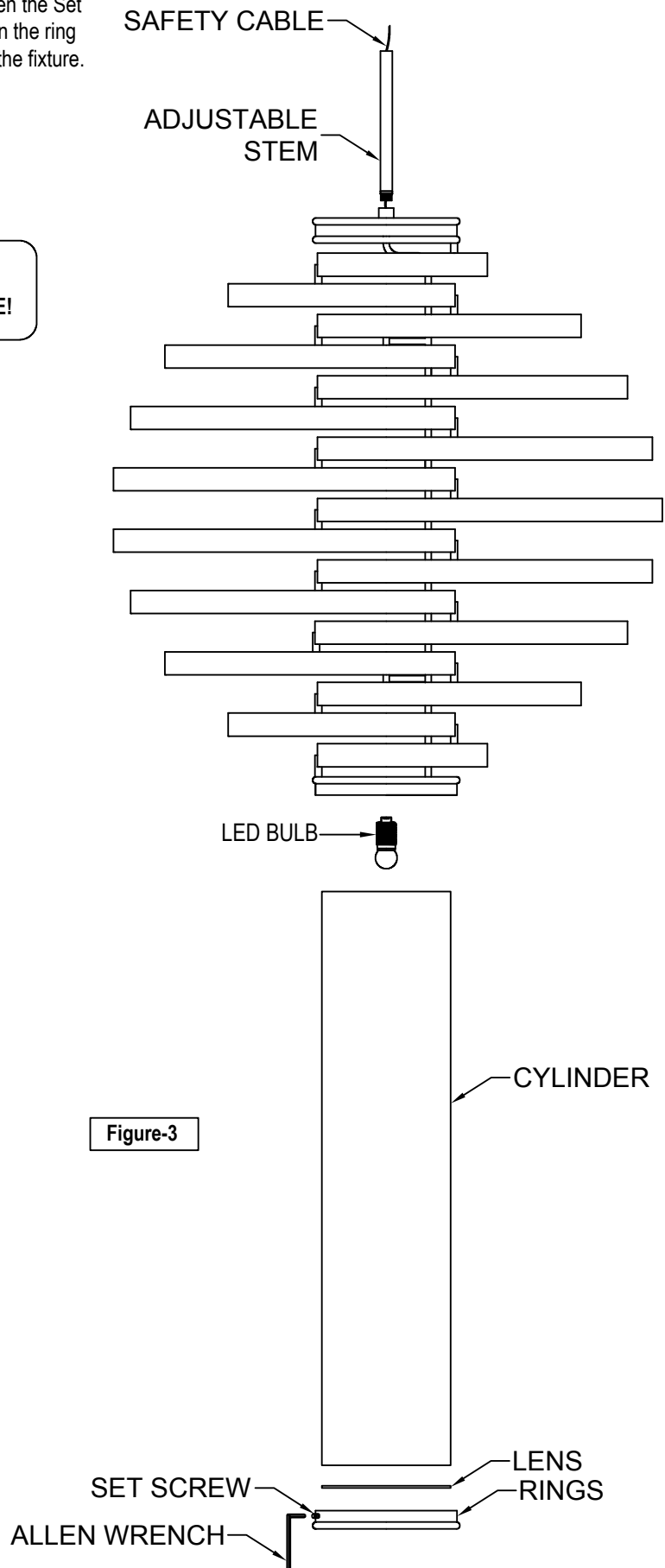


Figure-3