

# JASMINE II – EVERYDAY BATHS

72 x 36 1/8 x 21

SOAKER MODEL #1572420

WHIRLPOOL MODEL #1572421



## FEATURES

- Island bath
- Integral arm rest
- Ergonomic backrest
- Molded toiletry shelves
- Slip-resistant textured bottom
- Universal drain
- AcrylX™ applied acrylic surface
- Lifetime limited warranty

### Whirlpool Features:

- 4 directional hydrotherapy jets
- Available in White and Biscuit/Linen only
- Color matched trim
- Pneumatic on/off control
- Advanced safety suction system

## OPTIONS

- Designer drain, waste & overflow

## AQUATIC ADVANTAGE

- National distribution
- 7 manufacturing facilities
- Private fleet
- Centralized customer service
- Field support

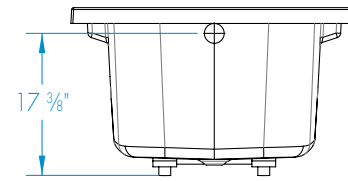
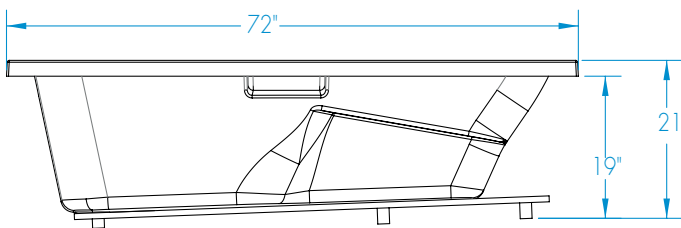
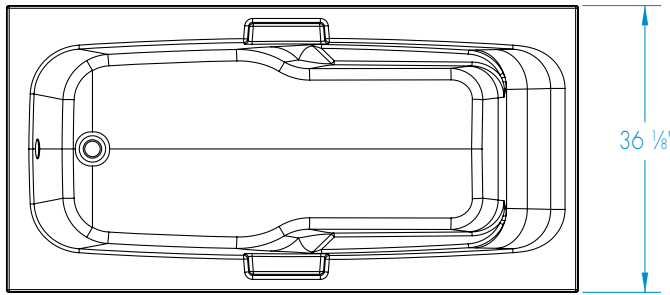
## COLOR OPTIONS

Stock	Upgraded	Premium
White	Almond Biscuit/Linen Bone	Black Mexican Sand Sand Bar Sterling Silver



# JASMINE II

72 x 36 1/8 x 21  
inches



**FEATURES** lbs      Dimensional Tolerance  $\pm \frac{3}{16}$ ". Dimensions needed for site preparation should be measured from the unit. Aquatic assumes no responsibility for preparatory work.

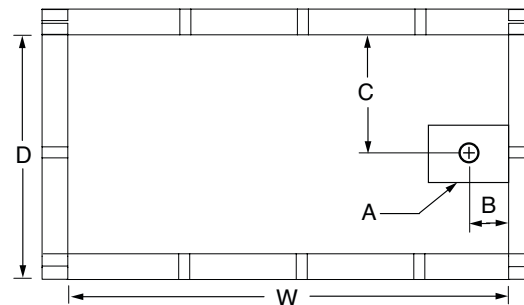
Model #	Material	Jets	Motor	Controls	Drain	Net Wt.	Pkg. Wt.
Soaker #1572420	AcrylX™	0	-	-	Universal	68	73
Whirlpool #1572421	AcrylX™	4	63 GPM	Pneumatic	Universal	118	123

## DIMENSIONS

Specifications	inches
Width: Overall / Net	72
Depth: Overall / Net	36 1/8 / 36 1/8
Height: Overall / Net	21
Enclosure Opening	-
Skirt Height	-
Drain Rough-In (from Back Wall)	18 1/16
Drain Rough-In (from Side Wall)	2 1/2
Drain: Diameter / Clearance	2 / 3/8

## FRAMING DIMENSIONS inches

Type	D Depth	W Width	H Height	A	B	C
Island	34	70	19	Box Out	2 1/2	18 1/16



## SUMP DATA

Top of Drain to Bottom of Overflow	Capacity to Overflow gal	Min. Operating Capacity gal	WIDTH @ centerline		DEPTH @ centerline	
			Top	Bottom	Top	Bottom
15	80	60	65	49	26 1/2	22