

6042BWCM – EVERYDAY BATHS

60 x 34-42 x 26 ½ inches

SOAKER MODEL #6042BWCM

WHIRLPOOL MODEL #6042BWCMWP



FEATURES

- Alcove bath
- Integral tiling flange (3T)
- 6 ½" wainscot
- Integral bowed skirt
- Integral toiletry shelves
- Extra large bathing well
- Ergonomic backrest
- Above-floor rough
- Slip-resistant textured bottom
- Center rear drain
- AcrylX™ applied acrylic surface
- Lifetime limited warranty

Whirlpool Features:

- 6 directional hydrotherapy jets
- Available in White and Biscuit/Linen only
- Color matched trim
- Pneumatic on/off control
- Advanced safety suction system

AQUATIC ADVANTAGE

- National distribution
- 7 manufacturing facilities
- Private fleet
- Centralized customer service
- Field support

COLOR OPTIONS

Stock	Upgraded	Premium
White	Almond Biscuit/Linen Bone	Black Mexican Sand Sand Bar Sterling Silver

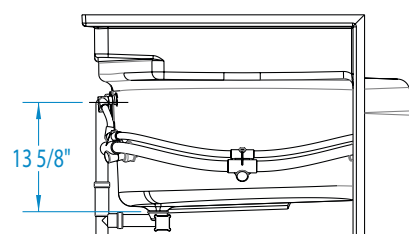
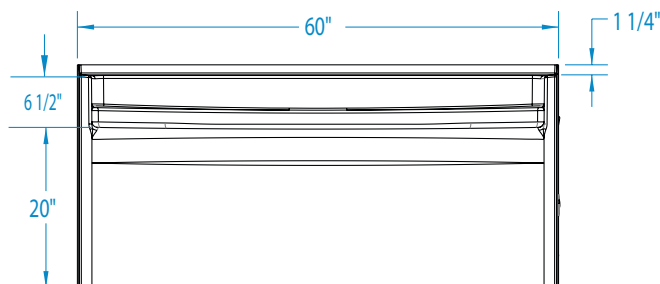
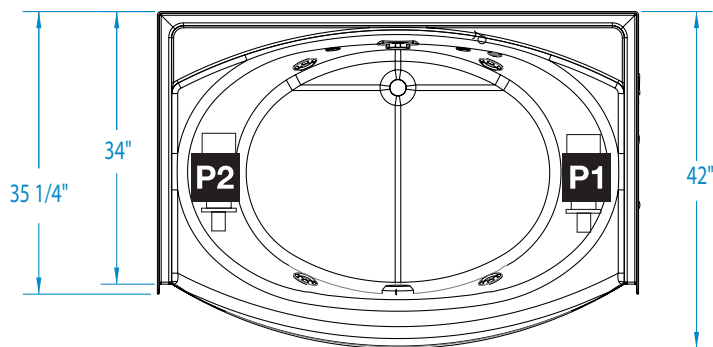
OPTIONS

- Designer drain, waste & overflow



6042BWCM

60 x 34-42 x 26 1/2 inches



AFR: Allows for above the floor installation of waste, overflow and drainage.

FEATURES lbs Dimensional Tolerance $\pm \frac{3}{16}$ ". Dimensions needed for site preparation should be measured from the unit. Aquatic assumes no responsibility for preparatory work.

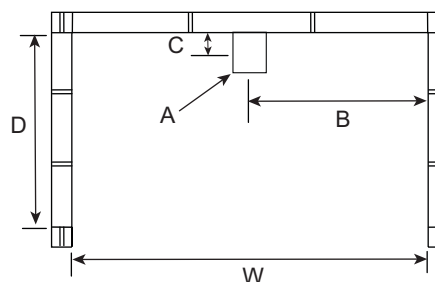
Model #	Material	Jets	Motor	Controls	Drain	Net Wt.	Pkg. Wt.
AFR Soaker #6042BWCM	AcrylX™	–	–	–	Center Rear	87	95
AFR Whirlpool #6042BWCMWP	AcrylX™	6	63 GPM	Pneumatic	Center Rear	130	140

DIMENSIONS

Specifications	inches
Width: Overall / Net	60
Depth: Overall / Net	35 1/4 / 34-42 (865-1065)
Height: Overall / Net	27 3/4 / 26 1/2
Enclosure Opening	56 1/2
Skirt Height	20
Drain Rough-In (from Back Wall)	2 1/2
Drain Rough-In (from Side Wall)	30
Drain: Diameter / Clearance	2 / 3 1/4

FRAMING DIMENSIONS inches

Type	D Depth	W Width	H Height	A	B	C
Alcove	35 1/4	60 1/8	25 3/8	Box Out	30	2 1/2



SUMP DATA

Top of Drain to Bottom of Overflow	Capacity to Overflow gal	Min. Operating Capacity gal	WIDTH @ centerline		DEPTH @ centerline	
			Top	Bottom	Top	Bottom
12 3/8	53 1/2	48 1/2	52 1/2	40 5/8	34 1/2	30 1/2