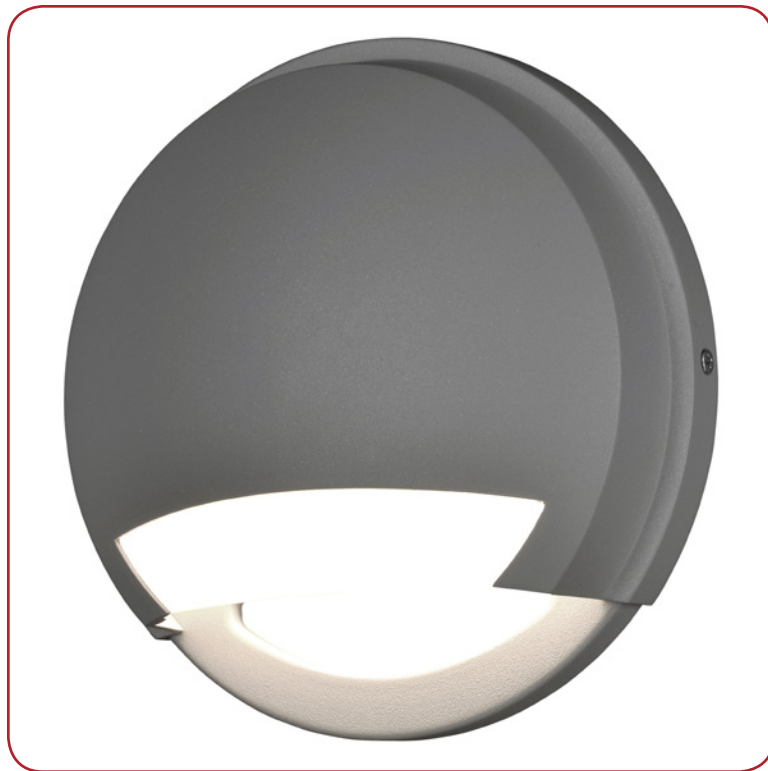


Model No :: **20044LEDDMG-SAT/OPL**  
 Name :: Avante



Project Name :: \_\_\_\_\_  
 Location :: \_\_\_\_\_  
 Type :: \_\_\_\_\_  
 Quantity :: \_\_\_\_\_  
 Notes :: \_\_\_\_\_

**Product Information**

Product ID :: 20044  
 UPC Code :: 641594206906  
 Mounting Type :: Wall  
 Finish :: Satin (SAT)  
 Diffuser :: Opal (OPL)  
 Alt. Finishes :: Black (BL); Bronze (BRZ); Satin (SAT)  
 Alt. Diffusers :: Opal (OPL)

**Product Dimensions**

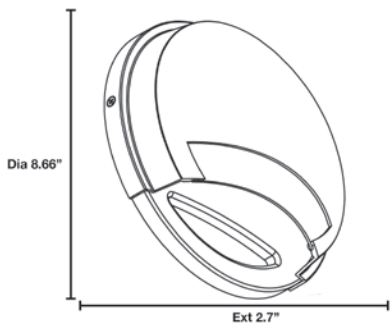
Fixture	Canopy
Length :: N/A	Length :: N/A
Width :: N/A	Width :: N/A
Diameter :: 8.75"	Diameter :: N/A
Extension :: 2.75"	Height :: N/A
Height :: N/A	
Overall Height :: N/A	



**Technical Specifications**

Qualifications	Specifications	Photometrics	Recommended Dimmers
Location Rating :: Wet	Frame Material :: Aluminum	CCT :: 3000	(MLV) LUTRON Diva DVLV-600P; (TRIAC) LEVITON Sureslide 6633-P; (TRIAC) LEVITON Trimatron 6684
Certification :: UL Listed (US/Canada)	Diffuser Material :: Glass	CRI :: 90	
IES File ::	Voltage :: 120v	Wattage :: 13.5w	
JA8 Compliant :: No	Lamping Type :: Dedicated LED	Nominal Lumens :: 1220Lm	
Energy Star :: No	Lamping Base :: SSL	Delivered Lumens :: 360Lm	
ADA Compliant :: Yes	Lamp Quantity :: 1	Additional Items :: Outdoor Installation California Energy Commission (CEC) Compliant (Title 24)	
Marine Grade :: Yes	Lamp Wattage :: 13.5 W		
Emergency Lighting :: No	Total Wattage :: 13.5w		
Warranty :: 5 Year Limited	Lamps Included :: Yes		
	J-Box Type :: Standard		

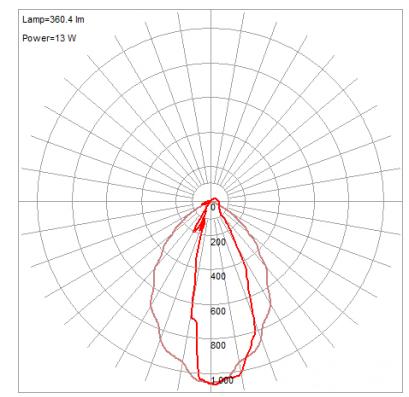
**Line Drawing #1**



**Line Drawing #2**

Image Not Available

**IES File**



**Toll Free 800-828-5483 • www.AccessLighting.com**

14410 Myford Road, Irvine, CA 92606  
 The information provided is subject to change without notice. ©2020 Access Lighting Corporation. All Rights Reserved  
 Rev. 202004 Filename:: 20044LEDDMG-SAT\_OPL.pdf

